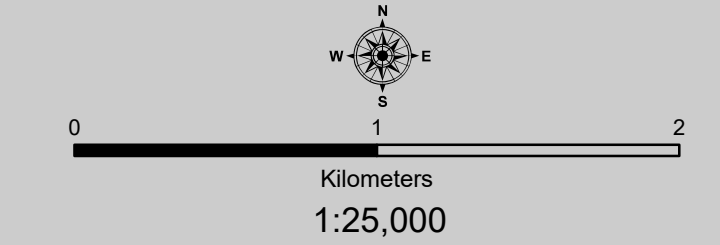


**COASTAL ZONE MANAGEMENT PLAN  
KERALA**

Sheet No: C 43 D 10/SE

Projection :- UTM Datum :- WGS 1984

Map No. : KL 63



Legend

- Coastal District Having CRZ
- Districts out of CRZ

**LEGEND**

- Light house
- Fish Landing Centre
- Fishing Harbour
- Port
- Sluice Gate - Prior to 1991
- Road
- Bridge
- Railway Line
- Bund - Prior to 1991
- Seawall
- Village Boundary
- Panchayat Boundary
- Municipal or Corporation Boundary
- Taluk Boundary
- District Boundary
- Port Limit
- Survey Plots
- Pier
- Groins
- Jetty/Breakwater
- Community Reserve
- CVCA Boundary
- Waterbody

**CRZ Lines**

- High Tide Line (HTL)
- Low Tide Line (LTL)
- CRZ Line for River/Creek
- 20m CRZ Line for Islands
- 50m CRZ Line - CRZ IIIA
- 200m CRZ Line - CRZ IIIB
- 500m CRZ Line
- Hazard Line

**CRZ CATEGORY**

**CRZ - I**

- Archaeological/Heritage Sites - CRZ I A
- Turtle Nesting Grounds- CRZ I A
- Mangroves - CRZ I A
- 50m Mangrove Bufferzone - CRZ I A
- Inter Tidal Zone - CRZ I B

**CRZ - II**

- CRZ II

**CRZ - III**

- No Development Zone - NDZ
- 50 to 500m from HTL - CRZ III A
- 200 to 500m from HTL - CRZ III B

**CRZ - IV**

- Waterbody - CRZ IVA
- Waterbody - CRZ IVB

**DATA SOURCE**

- National Centre for Sustainable Coastal Management
- HTL, CRZ-IA, CVCA
- Survey of India
- Hazard Line
- Survey and Land Records, Govt of Kerala
- Administrative Boundaries
- Department of Environment, Govt of Kerala
- Department of Fisheries, Govt of Kerala
- Bund/Sluice gate prior to 1991
- Department of Fisheries, Govt of Kerala
- Integrated Fisheries Management Plan for CZMP, Kerala
- Department of Tourism, Govt of Kerala
- Tourism Management Plan
- National Centre for Earth Science Studies
- CRZ categories and lines
- Infrastructure facilities - light house, Road, Railway Lines, Seawall, Breakwater, Jetty etc.

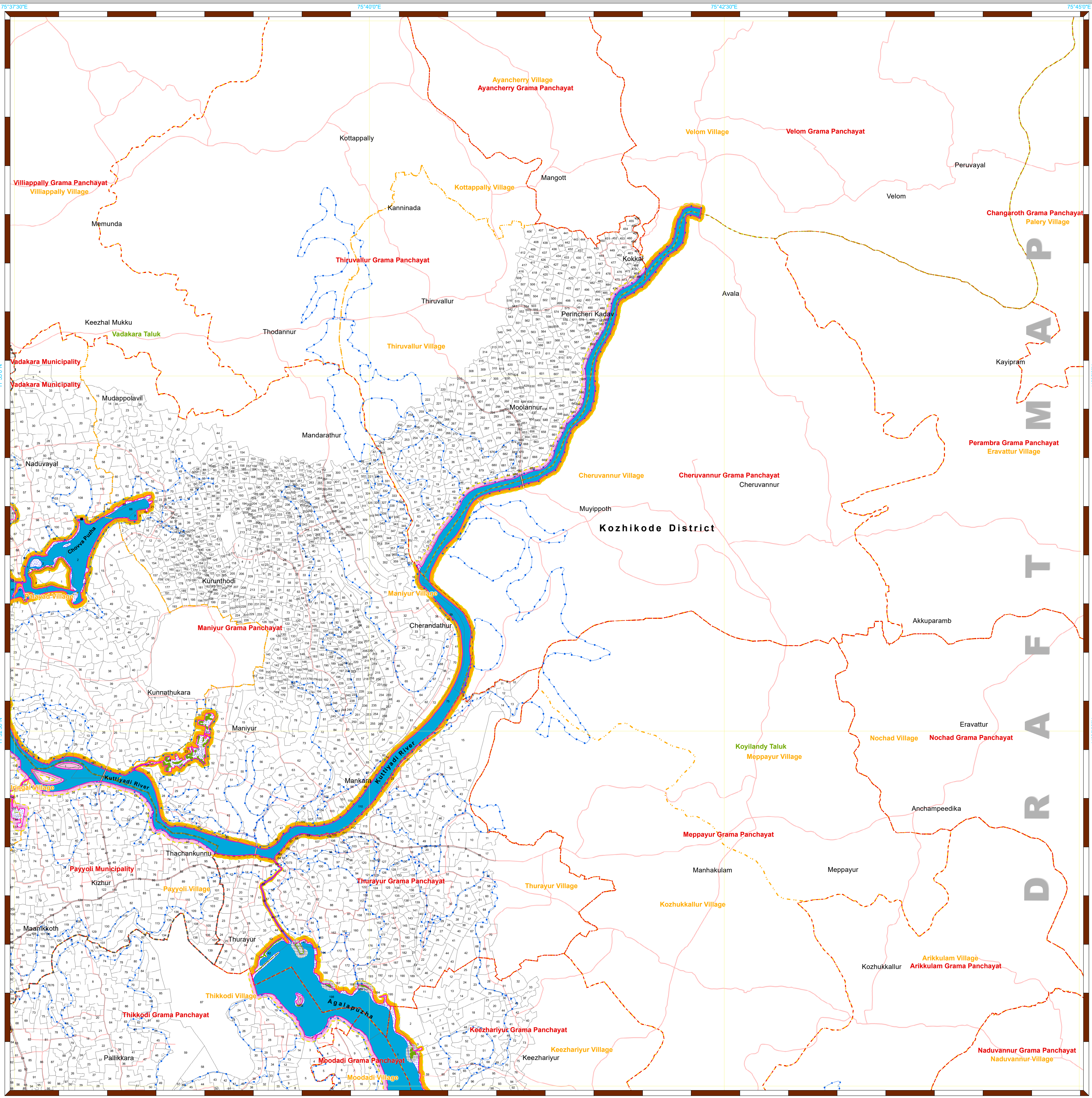
**NOTE:**

- Mangroves in private land will not require a buffer zone.
- Islands : 20m CRZ Line from HTL is valid only after the approval of IIMP of the particular Island.

**ABBREVIATIONS**

- CRZ : Coastal Regulation Zone
- CVCA : Critically Vulnerable Coastal Areas
- IIMP : Integrated Island Management Plan

Mapped During 2023



**PREPARED AS PER COASTAL REGULATION ZONE NOTIFICATION 2019**

Scrutinized by	Certified by	Concurred by	Approved by
D	R	A	F
M	A	P	P

Prepared by  
  
**National Centre for Earth Science Studies**  
 Ministry of Earth Sciences, Government of India, Thiruvananthapuram - 695 011

Prepared for  
  
**Department of Environment, Government of Kerala**