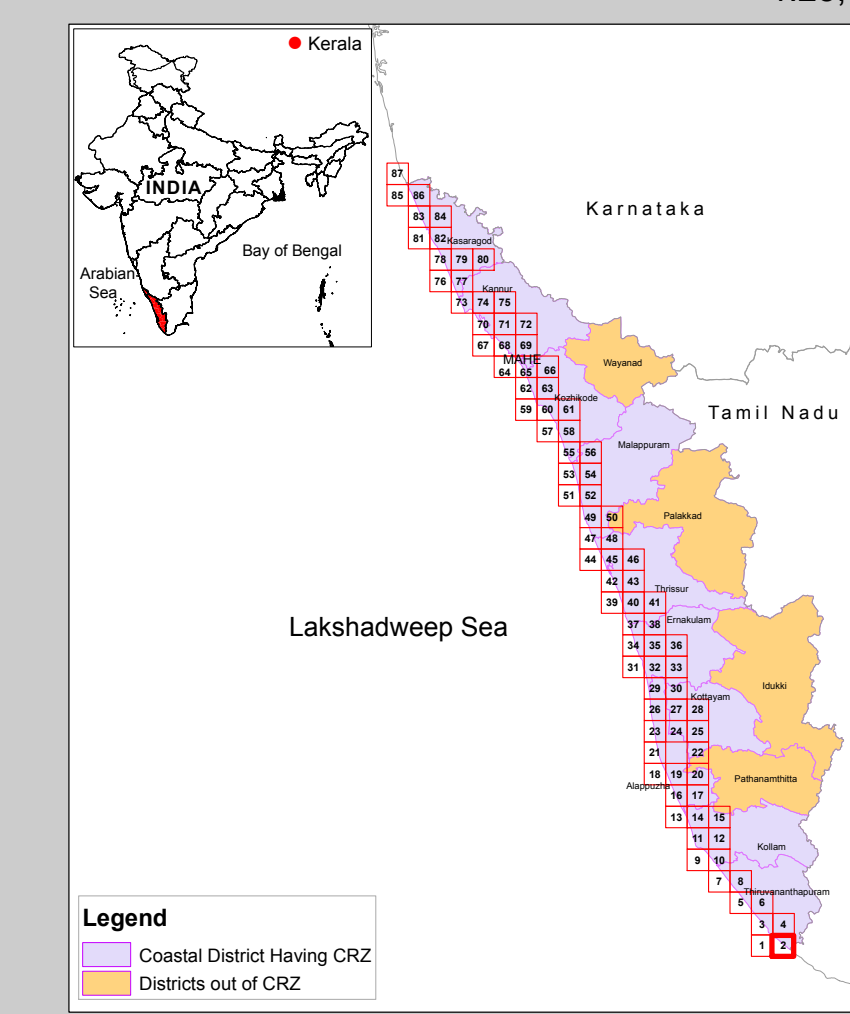
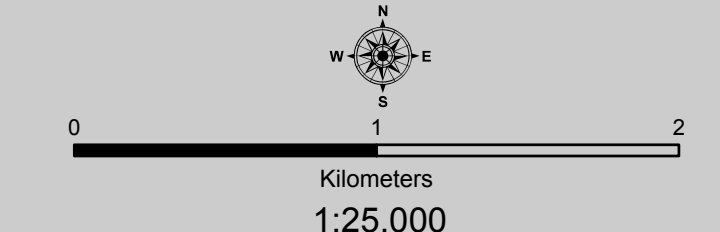
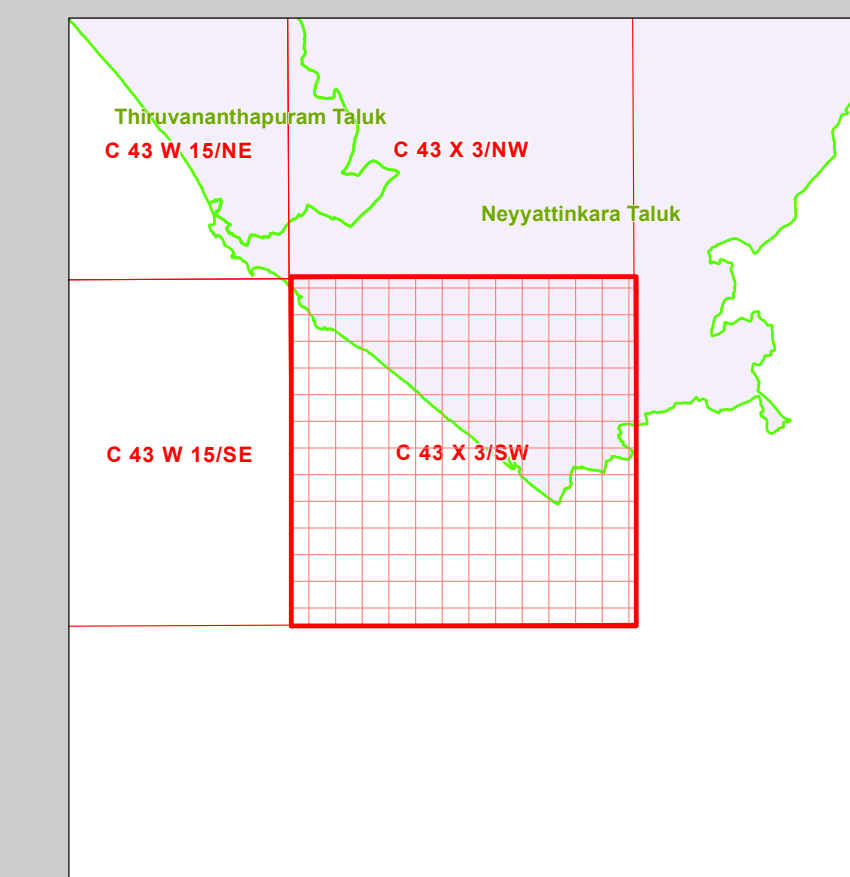


COASTAL ZONE MANAGEMENT PLAN KERALA

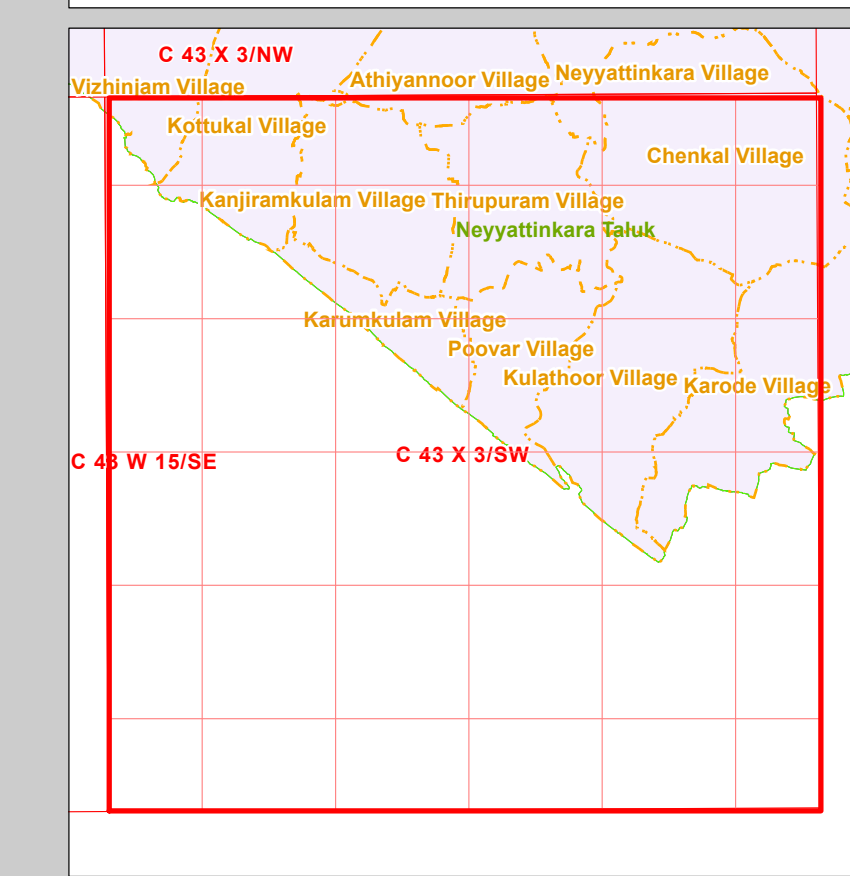
Sheet No: C 43 X 3/SW
Projection :- UTM Datum :- WGS 1984 Map No. : KL 02



- ### LEGEND
- Light house
 - Fish Landing Centre
 - Fishing Harbour
 - Port
 - Stuice Gate - Prior to 1991
 - Road
 - Bridge
 - Railway Line
 - Bund - Prior to 1991
 - Seawall
 - Village Boundary
 - Panchayat Boundary
 - Municipal or Corporation Boundary
 - Taluk Boundary
 - District Boundary
 - Port Limit
 - Survey Plots
 - Pier
 - Groins
 - Jetty/Breakwater
 - Community Reserve
 - CVCA Boundary
 - Waterbody



- ### CRZ Lines
- High Tide Line (HTL)
 - Low Tide Line (LTL)
 - CRZ Line for River/Creek
 - 20m CRZ Line for Islands
 - 50m CRZ Line - CRZ IIIA
 - 200m CRZ Line - CRZ IIIB
 - 500m CRZ Line
 - Hazard Line
- ### CRZ CATEGORY
- #### CRZ - I
- Archaeological/Heritage Sites - CRZ I A
 - Turtle Nesting Grounds- CRZ I A
 - Mangroves - CRZ I A
 - 50m Mangrove Bufferzone - CRZ I A
 - Inter Tidal Zone - CRZ I B
- #### CRZ - II
- CRZ II
- #### CRZ - III
- No Development Zone - NDZ
 - 50 to 500m from HTL - CRZ III A
 - 200 to 500m from HTL - CRZ III B
- #### CRZ - IV
- Waterbody - CRZ IVA
 - Waterbody - CRZ IVB



- ### DATA SOURCE
- National Centre for Sustainable Coastal Management
 - HTL, 2) CRZ-IA, 3) CVCA
 - Survey of India
 - Hazard Line
 - Survey and Land Records, Govt of Kerala
 - Administrative Boundaries
 - Department of Environment, Govt of Kerala
 - Bund/Stuice gate prior to 1991
 - Department of Fisheries, Govt of Kerala
 - Integrated Fisheries Management Plan for CZMP, Kerala
 - Department of Tourism, Govt of Kerala
 - Tourism Management Plan
 - National Centre for Earth Science Studies
 - CRZ categories and lines
 - Infrastructure facilities - light house, Road, Railway Lines, Seawall, Breakwater, Jetty etc.

NOTE:
1. Mangroves in private land will not require a buffer zone.
2. Islands - 20m CRZ Line from HTL is valid only after the approval of IIMP of the particular Island.
3. The areas specified by the Department of Atomic Energy are classified as CRZ IIIA or CRZ IIIB.

ABBREVIATIONS
CRZ - Coastal Regulation Zone
CVCA - Critically Vulnerable Coastal Areas
IIMP - Integrated Island Management Plan
Mapped During 2023

PREPARED AS PER COASTAL REGULATION ZONE NOTIFICATION 2019

Scrutinized by	Certified by	Concurred by	Approved by
DRAFT MAP - CZMP 2019			

Prepared by

National Centre for Earth Science Studies
Ministry of Earth Sciences, Government of India, Thiruvananthapuram - 695 011
Prepared for

Department of Environment, Government of Kerala

DRAFT MAP